



12 Oakley Court, Stoke Lane, Gedling, NG4 2QS

Guide Price: £160,000

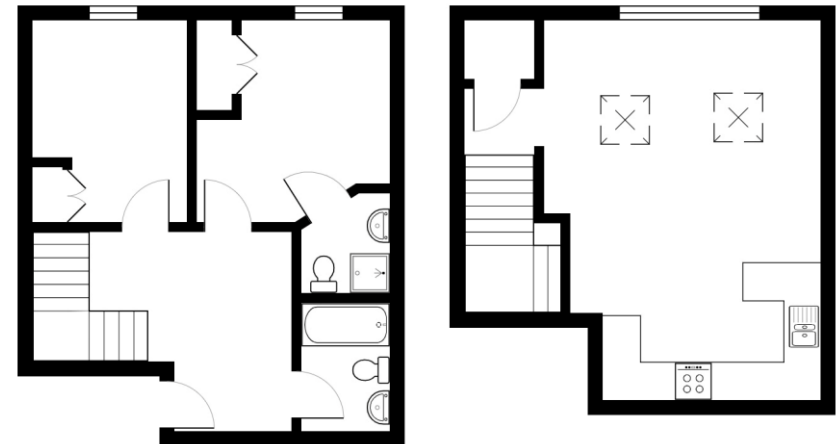
12 Oakley Court, Stoke Lane, Gedling, NG4 2QS

A large two-bedroom duplex apartment located in the heart of Gedling. To the entrance floor the property is made up of two double bedrooms, both with fitted wardrobes and one with en-suite. There is also a large entrance hall and a three-piece suite bathroom. Stairs lead to the top floor where there is a large open plan kitchen diner and living space with Velux windows and high ceilings. The kitchen is fitted with integrated appliances and has plenty of cupboard space. Externally there is off road gated parking with one allocated parking space. No Chain.

Accommodation & Amenities

- Large Second Floor Duplex Apartment
- Two Double Bedrooms & Two Bathrooms
- Double Glazing Throughout
- Gas Central Heating
- Kitchen With Appliances
- Great Central Town Location
- Off Road Gated Parking
- Close To Local Amenities
- Council Tax Band C - Gedling Borough Council

Oakley Court, Stoke Lane, Gedling, NG4 2QS



Total Area: 67.1 m² ... 722 ft²

All measurements are approximate and for display purposes only



